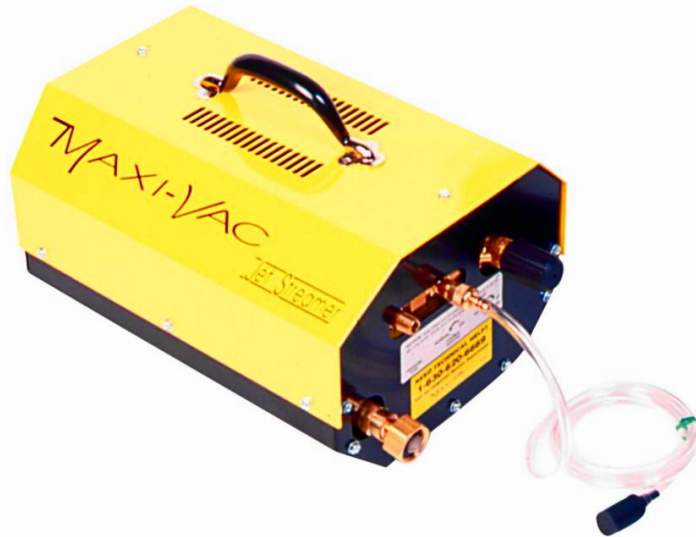


Model JS 700i — Rev A

Special Instructions & Parts List



Assembly Procedure

1. Secure insulated lance (28) to the trigger gun (29). Care must be taken to properly align lance so the nozzle is centered with gun.
2. Assemble pressure hose (30) to trigger gun (29) and the high pressure port on the machine (26).



CAUTION

CAUTION: Pipe sealant or Teflon tape should be used on all threaded connections. If a joint leaks, while the trigger is disengaged and the unit is on bypass, the unit will make a pulsing sound. This means water is leaking and the un-loader valve is opening for a few seconds. This pulsing is not a defect! But it does shorten the life of the pressure regulator if the leak is not corrected.

3. Electrical: This machine is equipped with a standard NEMA 5-15 UL and CSA approved male receptacle. It is designed so the operator may use a standard 3-prong extension cord of the desired length.



DANGER

NOTE: Only use a GFCI protected outlet, a 3-prong power cord equipped with a GFCI device, or a portable Plug-in GFCI device to protect from Ground Fault Shock. Use 14GA cord or larger to prevent overheating!



WARNING

WARNING: TO REDUCE THE RISK OF ELECTROCUTION, KEEP ALL CONNECTIONS DRY AND OFF THE GROUND. DO NOT TOUCH PLUG WITH WET HANDS.

Variable Pressure Control

The Variable Pressure Control (23) allows the operator to adjust the pressure to fit the cleaning task. Adjustable to maximum pressure of approximately 700 PSI for heavy stubborn tasks—yet the pressure can be lowered for more fragile items. Pressure is controlled by the simple rotation of the black plastic knob on the face of the unit

Increase Pressure—Clockwise Rotation

Decrease Pressure—Counterclockwise Rotation

It requires several complete rotations from minimum low to maximum high pressure.



CAUTION

CAUTION: The Pressure regulator (23) is preset at the factory to operate in the range of 0-700 PSI. Tampering with the internal settings in an attempt to increase output pressure voids the warranty.

Adjustable Nozzle

The “Hi-Lo” Nozzle (4) offers maximum versatility in that the operator can apply cleaners at low pressure—or rinse at high pressure. By rotating the barrel of the nozzle, the spray can be changed from 0° (for maximum penetration and power) to any desired fan shaped pattern.

Use of Soap or Other Chemicals

1. Place a container of soap or other chemicals next to the unit.
2. Place the clear plastic injection tube (27) into the container all the way to the bottom.



CAUTION

CAUTION: Make certain the end strainer is in place, clean and the tube is not clogged or kinked. Failure to do so could allow dirt, grit, sand, etc. to be sucked into the unit. This would block orifices and cause the unit to malfunction. If filters are not in place, the warranty is void.

3. Move the adjustable nozzle (4) forward to the low pressure position. The soap or chemical will automatically be mixed with the water and discharged through the nozzle.
4. To adjust the ratio of soap to water, turn the brass knurled body of the injector.

Decrease Soap Ratio—Clockwise Rotation

Increase Soap Ratio—Counterclockwise Rotation

Note: When the adjustment knob is completely closed (clockwise rotation), no soap flows through the injector. Opening the injector (counterclockwise rotation), more soap flows through the injector.

There is no exact formula for determining the mix of soap to water. Maximum ratio is 1 part soap to 4 parts water. However, water pressure, viscosity of solutions and many other features make it impossible to establish an exact ratio.

Flex Wand (Specifically Designed for the JS700i—Part # FW700)

For hard to reach surfaces, in tight corners, consider ordering the FW700.

An 18" flexible wand that can be bent into most any position. Designed for use with the JS700i Pressure Washer family.



Maintenance

1. Flush the unit with clear water after every use.
2. Flush the injector with clean water after every use.
3. The pump is lubricated at the factory. It is recommended that the lubricant be checked and replaced as needed after every 100 hours of operation. To do so:
 - A. Disconnect unit, disconnect water, make certain pressure is released from system.
 - B. Remove yellow cover from unit.
 - C. Remove black front plate from unit.
 - D. With a 3/16" hex wrench, remove the four (4) pump mounting bolts that secure the pump assembly to the face of the motor.
 - E. Carefully remove the entire pump assembly from the motor by pulling it toward the front of the machine about one (1") inch before lifting it out of the housing.



CAUTION

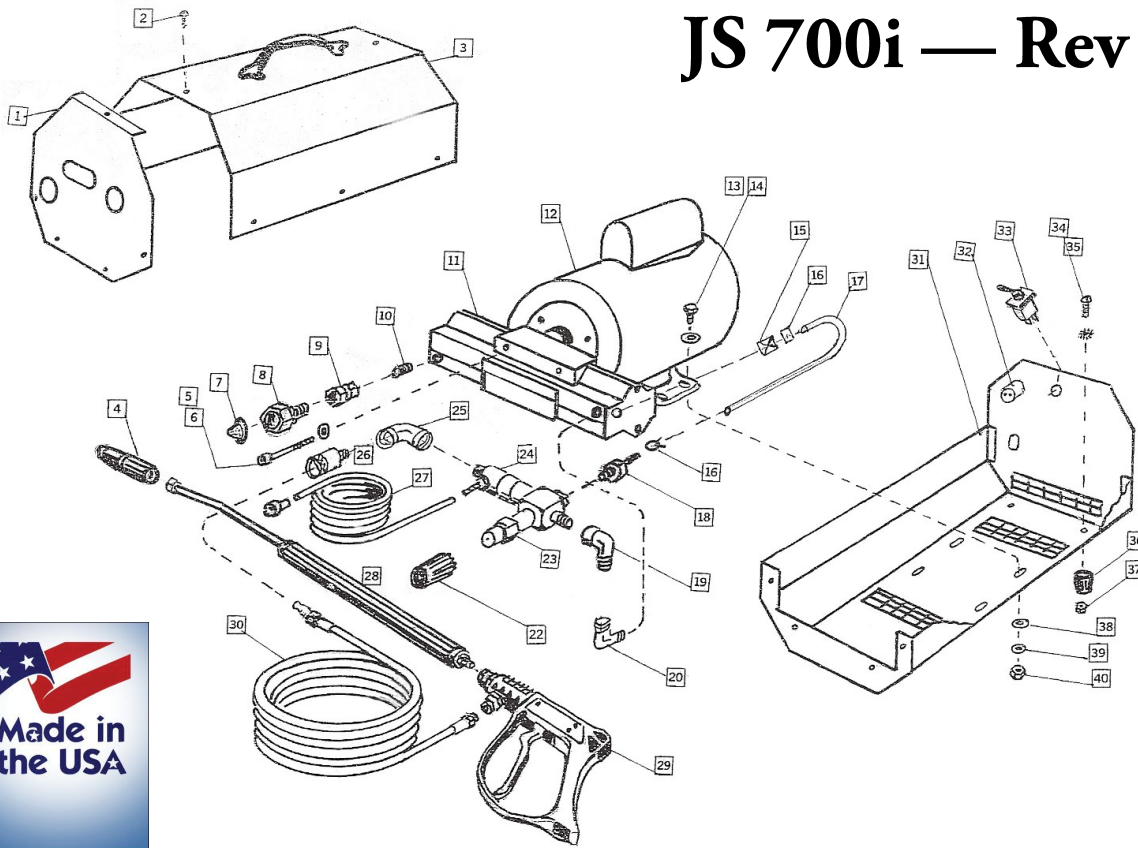
CAUTION: Be careful not to rotate cam on motor—or slide the connecting rod on the pump out of position. This makes alignment for reassembly more difficult.

- F. Examine the lubricant around the cam and bearing on the motor and around the connecting rod ends. If there is an ample supply and it appears soft and usable—reassemble unit, make certain the cam and ball bearing are seated properly in the recess of the connecting rod.
- G. If the lubricant is depleted, or appears unusable, apply a limited amount of good Lubriplate #3000 or other good lithium based, heavy duty grease around the moving parts.

Note: A complete replacement of grease requires only about one (1) tablespoon.

Do not pack solid with grease.

JS 700i — Rev A



ITEM	PART #	DESCRIPTION	QTY
1	70303	Front Plate	1
2	20105	Cover Screw	14
3	70302	Cover Assembly	1
4	70562	Hi-Low Nozzle	1
5	40012-1	Pump Mount Bolt	4
6	40012-2	Lock Washer	4
7	20140	Filter Washer	1
8	20239	Garden Hose Fitting	1
9	50043	Coupler	1
10	50032	Bushing	1
11	70012	Pump Assembly	1
12	70510	1/2 HP Motor	1
13	20113	Motor Bolt	4
14	20115	Flat Washer	4
15	70036	Barb Fitting	1
16	50031	Hose Clamp	2
17	40042	Bypass Hose	1
18	70036	Barb Fitting	1
19	51037	Elbow	1
20	51037	Elbow	1

ITEM	PART #	DESCRIPTION	QTY
22	70041	Regulating Knob	1
23	70540	Pressure Regulator	1
24	70540-1	Injector	1
25	90024	Elbow	1
26	5020-1	Quick Coupler	1
27	20133	Injector Tube	1
27	20135	End Screen	1
28	70165	Lance	1
29	50177	Trigger Gun	1
30	22516	Pressure Hose	1
31	70301	Base	1
32	22540	Recessed Receptacle	1
33	20120	Switch Assembly	1
34	70105	Bumper Bolt	4
35	20105-1	Star Washer	4
36	50008	Rubber Bumper	4
37	20109	Nut	4
38	20115	Flat Washer	4
39	20116	Lock Washer	4
40	20114	Motor Nut	4